

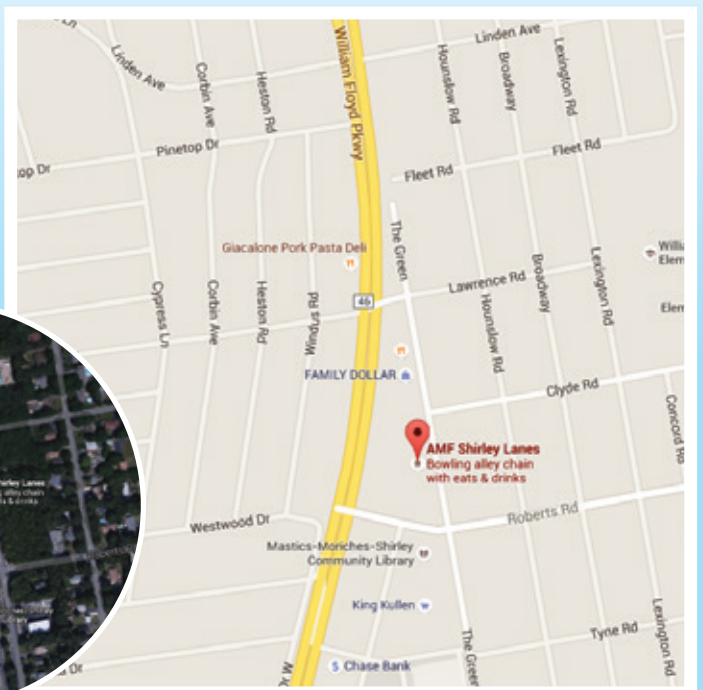
## 30 THE GREEN, SHIRLEY

**FOR LEASE**



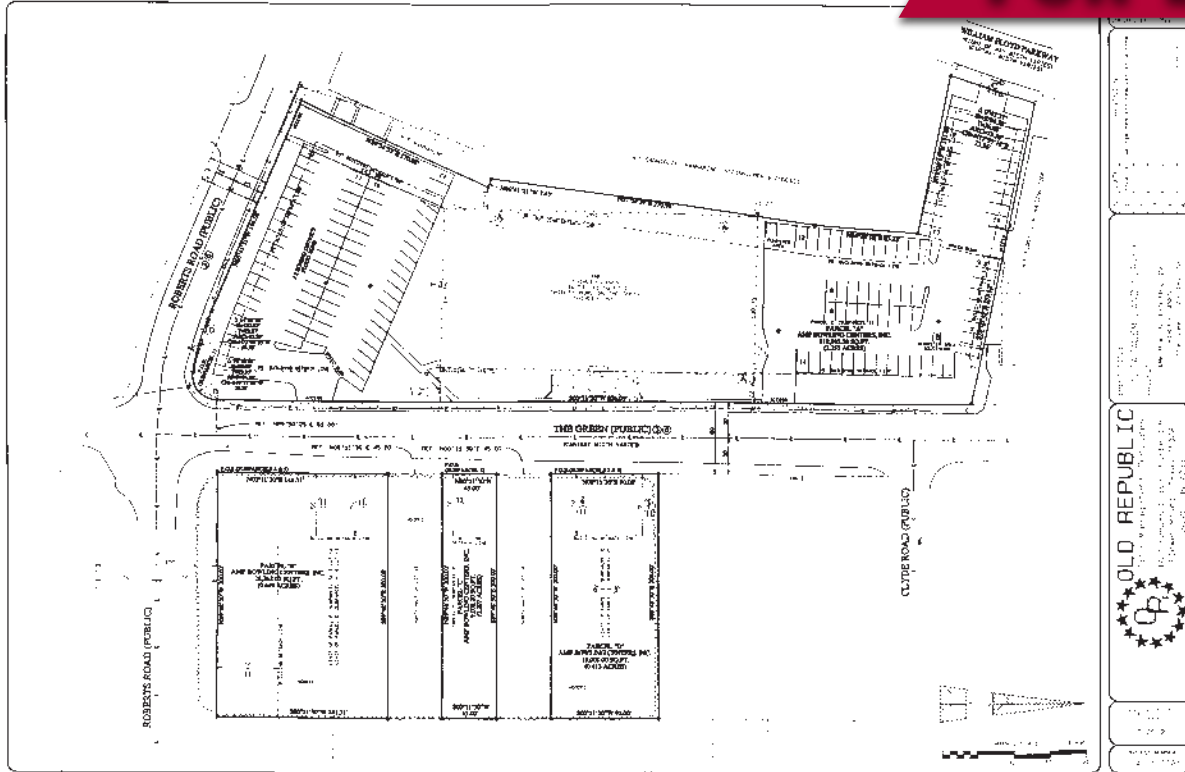
## PRICE AVAILABLE UPON REQUEST

34,000 sq. ft  
4.0 acres  
Taxes \$101,450  
151 Parking spaces  
54,000 cars per day  
272' Frontage on the Green  
Population 10,000 / 1 Mile Radius  
Population 54,000 / 3 Mile Radius



## 30 THE GREEN, SHIRLEY

# FOR LEASE



30 The Green, Shirley, NY 11967

